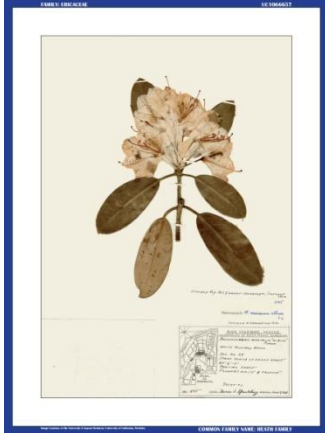


Summer Exhibition of Beatrix Farrand's Herbarium: Rhododendrons and Their Relatives



Bar Harbor, ME—The Beatrix Farrand Society invites you to view its 2014 exhibition of Farrand's herbarium specimens at Garland Farm in Bar Harbor. The exhibition will be mounted in early July and can be seen during Programs and Open Days, beginning July 6. For information and dates of the 2014 Programs and Open Days at Garland Farm, please visit www.beatrixfarrandsociety.org

The 2014 herbarium exhibition features members of Ericaceae, the Heath Family. Familiar native Heath Family members such as blueberries, cranberries and mountain laurels will be displayed side-by-side with nonnative relatives such as heaths, heathers and enkianthus. The plant specimens were collected in 1949-1954 from Reef Point, Beatrix Farrand's summer home in Bar Harbor.

Beatrix Farrand featured a wide variety of Heath Family members in her private and public landscape designs. She skillfully developed plantings of seasonal color and fragrance with rhododendrons and azaleas, and used native bearberry as a rugged groundcover with multi-season interest. At Garland Farm, Beatrix Farrand's last home, visitors pass under a spectacular arch of enkianthus on the walk from the parking area to the dooryard, then look back on a wall of mature rhododendrons. Behind the house, the Terrace Garden, recently restored with meticulous attention to detail, features many heaths and heathers that add texture and color to this garden's formal beds. This exhibition provides an opportunity to view images of plants collected at Reef Point, and to tour Garland Farm to see those same species in a living landscape. Farrand continues to teach us about selecting plants and combining them in effective plantings, through the herbarium specimens and her remaining landscapes.

More than 70 herbarium specimens will be displayed in this summer's exhibition. They represent just a fraction of the more than 2000 specimens in the complete collection, which was developed as a resource for year-round study by landscape students. The complete set of pressed plants form an accurate representation of what was actually planted at Reef Point.

The original herbarium specimens are now part of the Herbaria of the University of California, Berkeley. Through digitization, a very high-quality set of full-size prints of the specimens, including those that form this exhibition, are returning to Maine.

For more information about the Beatrix Farrand Society and Garland Farm, visit www.beatrixfarrandsociety.org. To learn about Open Days and the Society's 2014 programs, click on "Programs and Events". Click on "Directions" for driving guidelines.